



Hendrik Cech

<hendrik.cech@tum.de>

Researcher and PhD Student

Chair of Connected Mobility, TUM

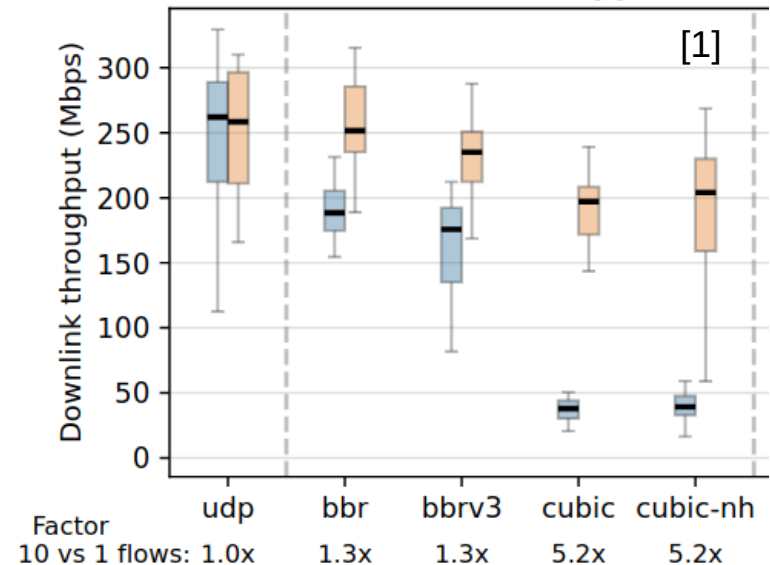
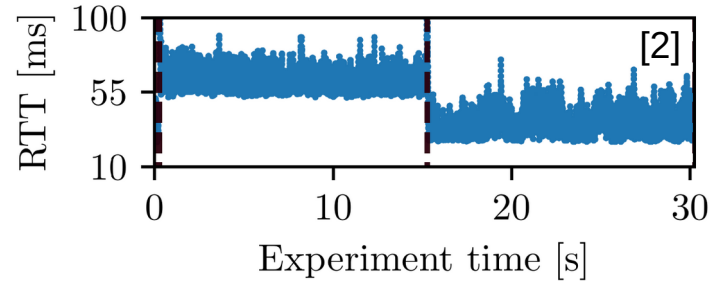
Research Interests

- LEO Satellite Networks: currently especially Starlink
- Transport Protocol Performance
- Multipath Transport: MPQUIC, performance measurements

MIR³
Sep 25, 2025

Transport-layer optimizations for LEO (Starlink) connections

- rapidly changing latency and bandwidth on a predictable schedule
- frequent single packet losses
- loss-based CC performs poorly, model-based (BBR) much better
 - Issue: slow start



[1] TCP Congestion Control Performance over Starlink, Garcia et al., ANRW'25

[2] A Multifaceted Look at Starlink Performance, Mohan et al., WWW'24